

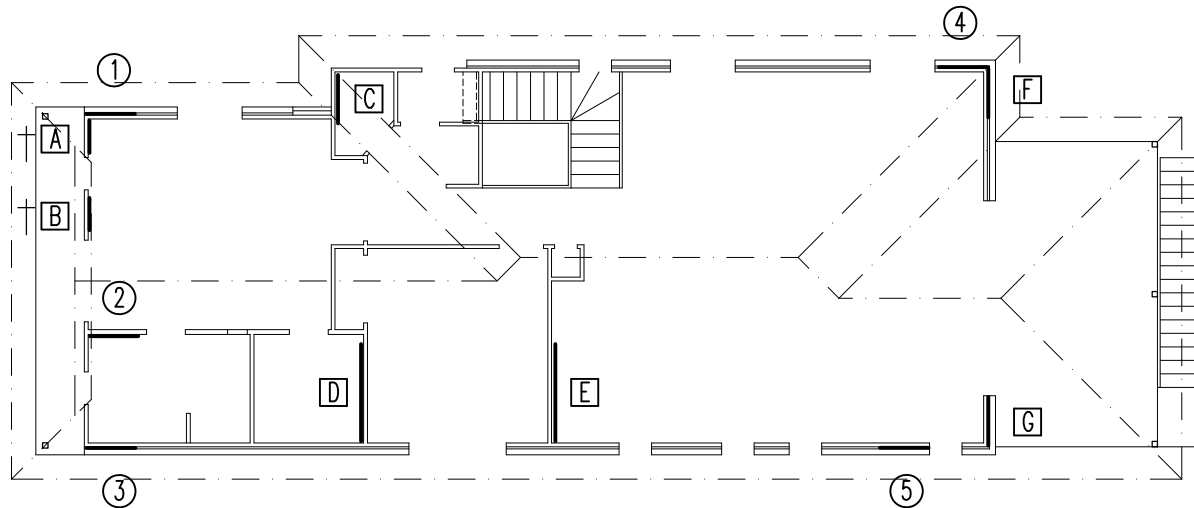
Total Wind Load Direction B  
 = 51.9 sq.m. x 0.58  
 = 30.1 kN



Total Wind Load Direction A  
 = 15.0 sq.m. x 0.73  
 = 11.0 kN



NOTE: Ply bracing panels less than 900mm but greater than 600mm in length to be fixed to floor frame or slab with 1M12 threaded rod to each end of panel



WIND DIRECTION A					
WALL No.	TB1(b)	CROSS	BLK	TB4(a)	TOTAL
1				0.9	5.4
2				0.9	5.4
3				0.9	5.4
4				0.9	5.4
5				0.9	5.4
6					
RESISTANCE ACHIEVED					27.0
RESISTANCE REQUIRED					11.0

WIND DIRECTION B					
WALL No.	TB1(b)	CROSS	BLK	TB4(a)	TOTAL
A				0.6	3.6
B				0.6	3.6
C				0.9	5.4
D				1.8	10.8
E				1.8	10.8
F				0.9	5.4
G				0.9	5.4
RESISTANCE ACHIEVED					45.0
RESISTANCE REQUIRED					30.1

### BRACING WALL TYPES

TB1(b) - Double metal strap braces as per "Fig.8.18(b) AS1684-2006" no straps (plates to studs) at each end of panel and nominal tiedown to floor = 1.5kN/m  
 CROSS - Cross brace between columns with M16 rods using turnbuckle in each rod for tightening ..... 750mm min depth footing = 12.5kN each set  
 M4 - Australian Hardboards M4 short wall fixed in accordance with 'Australian Hardboards'; 460mm long = 2.9kN  
 COL - Steel Bracing column as per table 8.15 AS1684-2006 ..... 75x4.0 shs 600mm high or less = 6kN; 601 to 900mm high = 4.5kN  
 BLK - 2.7M high, 190mm concrete blockwork, reinforced with Y12 tiedown rod and graut at each end. (Besser "Single Leaf Masonry Design" Table 7d) 1M = 12kN, 1.2M = 15kN, 1.8M = 23kN, 2.4M = 29kN, 3M = 35kN, 3.6M = 40kN  
 TB2(a) - Brick bracing piers in accordance with "TABLE 12 - CLAY BRICK CONSTRUCTION QLD. - VOLUME 1" = 1.5kN in each direction  
 TB4(a) - 4mm (F14) structural ply sheet bracing fixed in accordance with "STRUCTURAL PLYWOOD WALL BRACING - LIMIT STATE DESIGN MANUAL" with top plate fixed to slab or floor frame with 1M12 anchor rod/bolt each end of panel + 1M12 bolt at 1200mm max crs (for top and bottom fixing at 150mm crs) or 1M12 bolt at each end of panel and at 1200mm max. intermediate crs (for top & bottom fixings at 50mm staggered crs) = 6.0kN/m

A	DATE	DRAWN
VER	DATE	DESCRIPTION



**ALAN BRIND**  
 DESIGN & CAD DRAFTING PTY LTD

8 Kaoyong Crt, FERNY GROVE, Q, 4055. Fax 3851 3796. Ph 3851 3166

BSA LIC. 75230

ACN 072 663 364

PROJECT	SCALE 1:100 at A3	DRAWN A. Brind
AT:	FOR:	

DRAWING TITLE	JOB I.D.
<b>UPPER LEVEL BRACING PLAN</b>	DWG No <b>W8</b>
	VER <b>A</b>